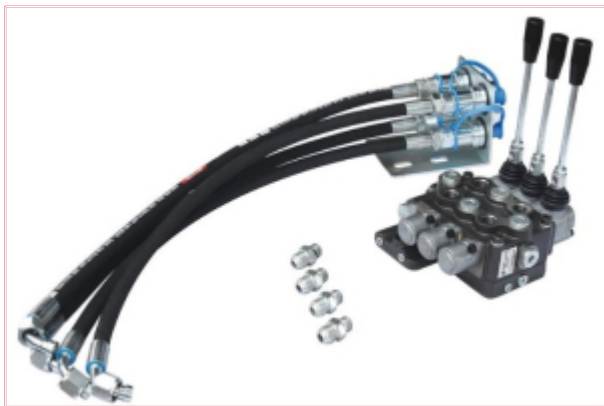


## S.165655 3/8" BSP Twin Section MF Control Valve Assembly



**Part No:** S.165655

**Price:** £559.84 (exc VAT) | £671.81 (inc VAT)

### Specifications

S.165655 3/8" BSP Twin Section MF Control Valve Assembly

Special directional control valve for Massey Ferguson Tractors

This valve is assembled directly onto the lift cover

Working ports: 3/8" BSP

2 x Double acting spool sections

Handle 1 : Working ports are 3/8" BSP. Double acting spool with spring centre control.

This handle is to control the external hydraulic function (implement/attachment of tractor).

Handle 2 : Ports are plugged, spool has detent control. This handle is used to change between external and internal hydraulics.

Handle 3 : Working ports are 3/8" BSP. Double acting spool with spring centre control.

This handle is to control the external hydraulic function (implement/attachment of tractor).

Oil returns from valve directly into the hydraulic lift head

For 2 x double acting applications only 4 pipes and fittings are required

Ideal for operating log splitters, tipping trailers etc.

NB: Tractor models are for cabless platform tractors where the hydraulic lift cover is accessible.

Ports: 3/8" BSP

Twin Section type assembly